

NOVEMBER 2025

Water Cannot Wait: Why WASH Must Be Central at COP30 and Beyond

WaterAid/ Khaula Jamil

The Climate Crisis is a Water Crisis

Millions of people are living without access to **water, sanitation, and hygiene (WASH)** infrastructure and services. Clean water, decent toilets and good hygiene are low-regret investments: every US \$1 spent on climate-resilient WASH delivers at least US \$7 in social and economic returns. Yet WASH receives less than 2% of global climate finance.

More than 90% of climate impacts manifest through water such as floods, droughts, and storms that destroy lives, health systems, and economies. Without climate-resilient WASH services, adaptation fails, and communities are left behind.

Calling for Canada's Leadership for Water at COP30

As Canada looks to its climate finance commitment for 2026 and beyond, it is time to position water at the heart of a people-centered, justice-driven adaptation agenda. Uniting climate resilience, health of people and planet, Truth and Reconciliation, and a whole-of- government approach requires a fit for purpose approach to water security.

Through global platforms including the Baku to Belém Roadmap and the G7 Water Coalition, Canada must champion water resilience at home and internationally supporting Indigenous-led governance, locally led adaptation, and loss-and-damage recovery that leaves no one behind.

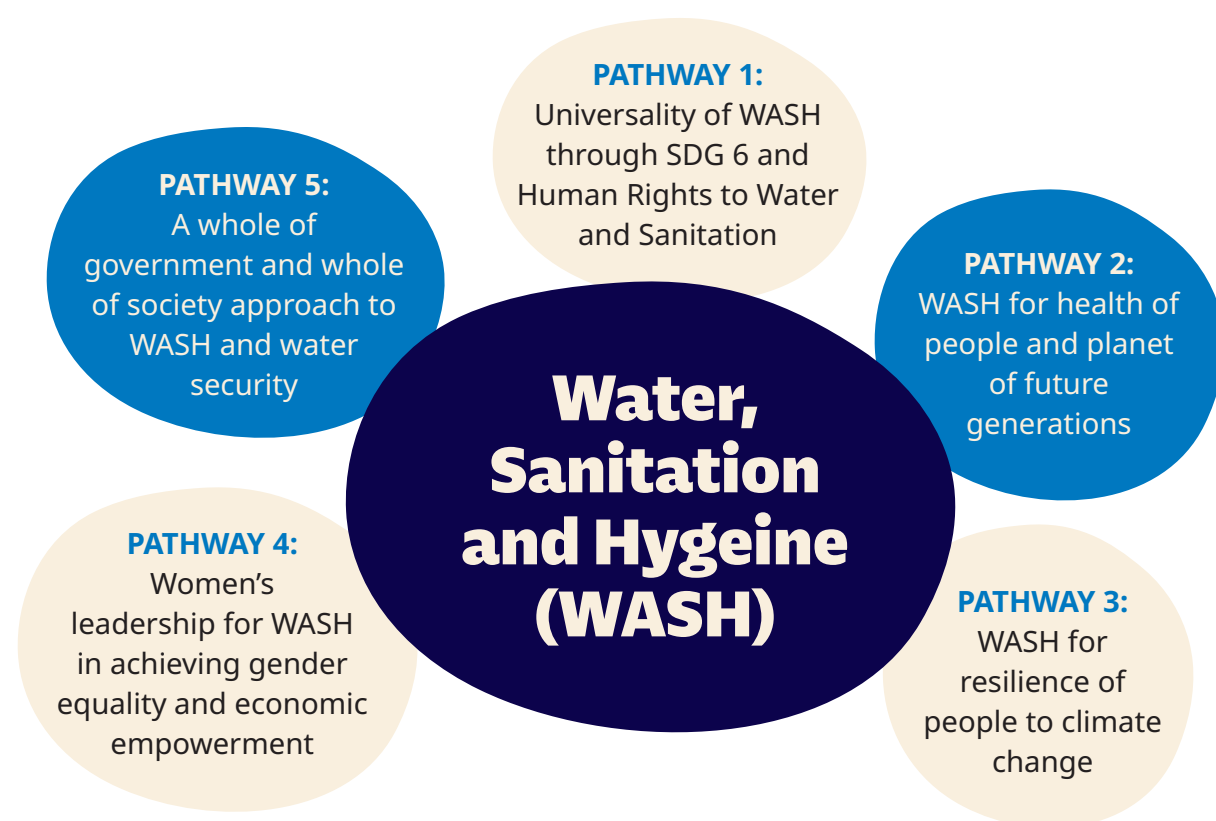
WaterAid's COP30 Asks of Canada

1. Bring Canada's leadership to secure agreement on **measurable WASH indicators for the Global Goal on Adaptation**, with embedded equity and rights principles.
2. Champion scale up of **grant-based financing for climate-resilient WASH and water security under the Loss and Damage Fund** to restore systems damaged by climate impacts in the most climate vulnerable communities.
3. Contribute **Canada's voice and commitment for water to strengthen the Baku Dialogue on Water for Climate Action** as a permanent UNFCCC feature, elevating WASH across COP outcomes and ensuring continuity between summits.
4. **Demonstrate Canada's commitment to a 'blue thread'** of water for climate, biodiversity, food systems, and health with gender-responsive and climate resilient WASH priorities across NDCs and NAPs.
5. Reflect **Canada's commitment to climate justice and Reconciliation** at home and globally through inclusive water governance models that uphold rights of people and planet and build Indigenous-to-Indigenous collaboration.

Climate-Resilient WASH in Action

- **Behavioural Adaptation for Water Security and Inclusion (BASIN)**¹ is researching applications of behaviour and psychological science in how people adapt to climate change through management of water resources, use of climate information, and the role of local climate champions.
- **Strengthening Wholistic and Inclusive Systems for Health (SWISH)**² will build health system resilience to crises including disease outbreaks and extreme weather events. Climate hazard assessments including weather and climate data and trends in target geographies will inform climate-resilient WASH infrastructure plans to avoid disruptions from flooding, droughts and storms.

The Case for Action – the Centrality of WASH



About WaterAid

WaterAid Canada is a member of WaterAid, an international not-for-profit, determined to make clean water, decent toilets, and good hygiene normal for everyone, everywhere. Only by tackling these three essentials in ways that last can people change their lives for good. At COP30, WaterAid Canada joins a global coalition urging negotiators to put WASH at the centre of climate action.

¹. This work was funded by UK aid from the UK government and by the International Development Research Centre, Ottawa, Canada as part of Climate Adaptation and Resilience (CLARE) research programme. The views expressed herein do not necessarily represent those of the UK government, IDRC or its Board of Governors.

². This project is undertaken in partnership with the Government of Canada.